



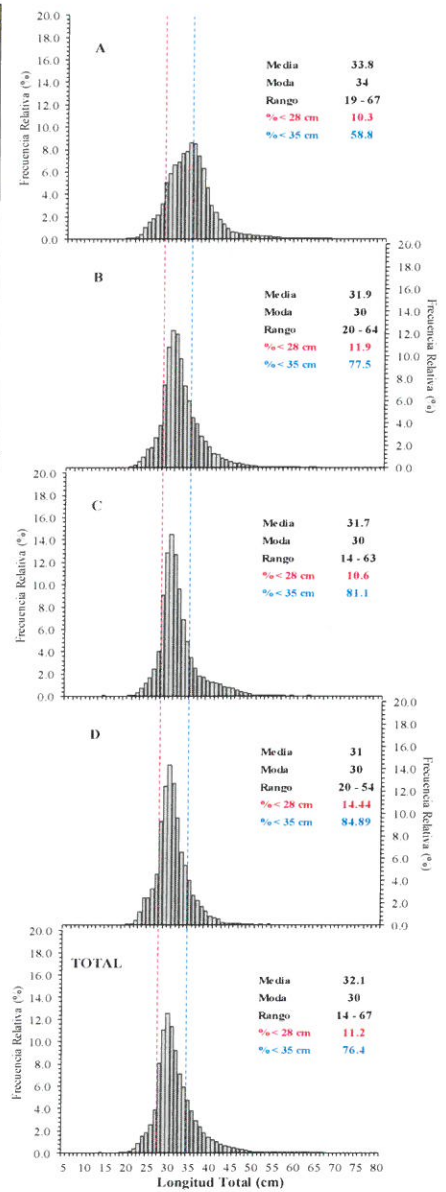
Reporte 1. Pesquería de Merluza

31 de Enero de 2018

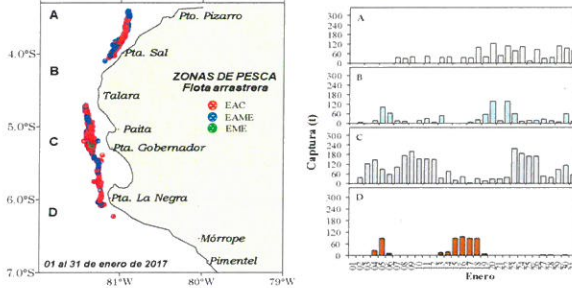
Desembarque (t) de Recursos Demersales de la Flota Arrastrera

DIA	INDUSTRIAL			TOTAL MERLUZA	Otros demersales	TOTAL	Número embarcaciones		
	EAC	EAME	EME				EAC	EAME	EME
Jul-17	1914.5	1556.7	8.7	3479.8	161.3	3641.2			
Ago-17	2621.7	2515.0	11.1	5147.8	178.1	5325.9			
Sep-17	149.2		0.0	149.2	33.4	182.6			
Oct-17	1927.9	1033.4	18.0	2979.3	165.4	3144.8			
Nov-17	2700.6	2133.3	1.3	4835.2	234.5	5069.7			
Dic-17	3640.5	1575.1	11.2	5226.8	198.1	5424.9			
02-15-Ene	1289.1	992.8	0.0	2281.9	67.0	2348.9			
16-Ene	93.1	80.4		173.5	3.6	177.1	8	2	
17-Ene	91.2	38.4		129.6	2.8	132.4	5	1	
18-Ene	120.2	118.0		238.2	5.7	244.0	8	3	
19-Ene	83.0	32.7		115.7	7.5	123.3	6	1	
20-Ene	152.8	131.1		283.9	7.2	291.2	10	2	
21-Ene	86.8			86.8	1.2	88.0	5		
22-Ene	173.3	107.6		280.9	21.4	302.3	9	3	
23-Ene	237.9	121.2		359.1	4.9	364.0	12	3	
24-Ene	179.0	124.9		303.9	6.1	310.0	12	3	
25-Ene	122.0	79.6		201.5	3.4	204.9	9	2	
26-Ene	158.1	114.8		272.9	16.2	289.1	11	3	
27-Ene	59.0	38.3		97.3	3.2	100.5	5	1	
28-Ene	30.9	56.1		87.0	4.4	91.4	3	2	
29-Ene	123.8	78.7		202.5	5.7	208.3	8	2	
30-Ene	160.0	108.6	0.6	269.2	7.9	277.1	10	3	1
31-Ene	89.4	57.1		146.5	5.0	151.5	8	2	
Total	16203.8	11093.9	50.8	27348.5	1144.2	28492.8			

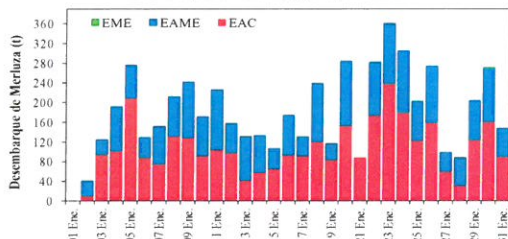
Estructura de Tallas por Subáreas del 01 al 31 Enero



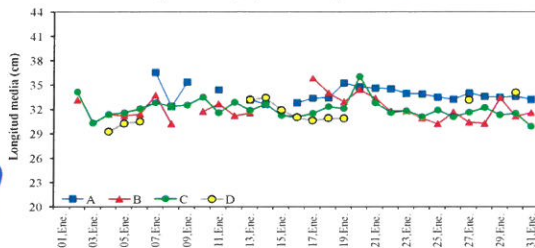
Distribución espacial de la flota y captura (t) por subárea del 01 al 31 Enero



Desembarque de Merluza (t) por tipo de Flota



Longitud media (cm) de Merluza por subáreas



Estadísticas descriptivas de la estructura de tallas de Merluza por subárea del 16 al 31 Enero

Dia	A				B				C				D			
	Rango	Moda	Media	%<28 cm	Rango	Moda	Media	%<28 cm	Rango	Moda	Media	%<28 cm	Rango	Moda	Media	%<28 cm
16-Ene	23 - 52	32	32.7	16.0	21 - 47	31	31.0	17.4	20 - 47	30	31.0	14.8	20 - 46	30	30.6	15.7
17-Ene	20 - 62	32	33.3	13.9	22 - 56	34	35.8	1.8	21 - 48	33	31.4	10.7	21 - 49	30	30.6	15.7
18-Ene	21 - 63	34	33.4	11.6	23 - 57	32	34.0	4.1	23 - 52	30	32.3	10.8	20 - 50	30	30.9	15.5
19-Ene	24 - 61	36	35.2	2.6	21 - 56	31	32.9	8.1	20 - 46	30	32.0	14.4	23 - 45	31	30.9	15.9
20-Ene	22 - 63	35	34.7	3.2	20 - 63	34	34.4	7.1	22 - 52	33	36.0	6.3				
21-Ene	21 - 53	36	34.6	2.8	22 - 44	32	33.3	5.3	22 - 51	32	32.7	6.4				
22-Ene	19 - 63	35	34.4	3.9	20 - 60	29	31.7	14.7	21 - 53	29	31.5	11.0				
23-Ene	21 - 62	33	33.9	8.5	20 - 55	31	31.7	17.1	20 - 46	30	31.7	10.6				
24-Ene	21 - 66	34	33.8	11.1	22 - 43	31	30.9	13.0	20 - 54	30	31.0	15.1				
25-Ene	21 - 54	32	33.4	7.0	20 - 52	30	30.1	26.0	21 - 55	30	31.8	11.2				
26-Ene	20 - 66	34	33.2	13.6	20 - 54	30	31.6	13.4	20 - 57	30	31.0	13.9				
27-Ene	21 - 65	35	33.9	9.1	21 - 50	30	30.4	18.2	20 - 59	31	31.5	15.6	25 - 48	32	33.2	3.1
28-Ene	20 - 66	34	33.5	14.9	21 - 46	30	30.2	17.9	21 - 52	30	32.1	16.9				
29-Ene	21 - 63	31	33.4	12.0	24 - 58	32	33.4	11.9	21 - 56	30	31.2	14.9				
30-Ene	20 - 67	34	33.5	15.5	21 - 52	31	31.1	12.5	21 - 52	30	31.4	12.2	20 - 46	34	34.1	10.3
31-Ene	20 - 64	32	33.1	14.6	22 - 52	31	31.5	10.6	20 - 56	29	29.8	19.4				

Cifras preliminares.

